

Information Resource

Area 15 serves as a Census Data Center and, as such, maintains a large collection of census data.. Also available is information about various government programs designed to assist community development. Programs include:

- *CDBG—Community Development Block Grants*
- *RISE—Revitalize Iowa’s Sound Economy*
- *CEBA—Community Economic Betterment Account*
- *REAP—Resource Enhancement and Protection*
- *CLG—Certified Local Government*
- *HRDP—Historic Resource Development Program*
- *PFSA—Public Facilities Set Aside*
- *EDSA—Economic Development Set Aside*
- *LHAP—Local Housing Assistance Programs*
- *HAAPP—Housing Assessment and Action Planning Program*

How to Contact the RPC

The Regional Planning Commission staff are available to assist you with your next project.

Please stop in and see us or contact us by any means listed below.

Our office is located on the Indian Hills Community College (IHCC) Ottumwa campus.

Our hours are 8:00am-4:30pm, Monday—Friday.



Planning For
Better Communities

Area 15 Regional Planning Commission

651 Indian Hills Drive, Building 17
PO Box 1110
Ottumwa, IA 52501

Phone: 641.684.6551
Fax: 641.684.4894
Email: area15rpc@indianhills.edu
Web: www.area15rpc.com

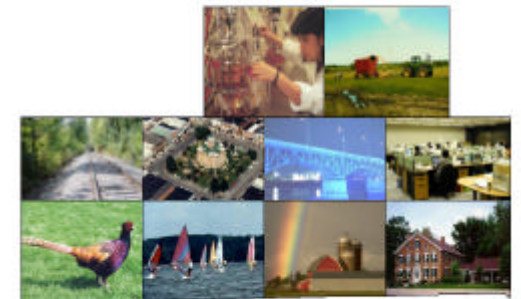
Funded in part from the U.S. Department of Commerce
Economic Development Administration
Iowa Department of Economic Development

LAST UPDATED: 04.20.05



Area 15 Regional Planning Commission

Planning For Better Communities



Visit us at www.area15rpc.com
“Planning at your fingertips”

Tel: 641.684.6551

WHAT IS THE REGIONAL PLANNING COMMISSION?

The Area 15 Regional Planning Commission (RPC) is a voluntary association of member local governments whose primary purpose is to cooperate in finding solutions to similar local problems and needs.

WHO CAN PARTICIPATE IN THE RPC?

Any local government in the RPC service area is eligible to participate. The service area includes the counties of: **Appanoose, Davis, Jefferson, Keokuk, Lucas, Mahaska, Monroe, Van Buren, Wapello,** and **Wayne** counties.

WHAT ARE THE ADVANTAGES OF RPC MEMBERSHIP?

Through membership in the RPC, local governments can:

- Share local strategies for solving problems and developing opportunities.
- Share resources they could not afford individually.
- Coordinate the development of important regional projects that impact several local governments
- Have access to the services of a full-time professional staff.

PLANNING SERVICES

Economic Development

The RPC produces a variety of economic development plans, many of which are used as supportive documentation for grant and loan applications.

Community Development

The RPC is involved in grant application assistance, land use planning and other support services needed to meet the changing needs of today's communities.



Tourism

The RPC offers assistance in preparation of tourism plans and the needed coordination of such plans.

Transportation

The RPC is responsible for in-depth studies that guide the operation of the area's 10-15 Transit and OTA public transit systems. Transportation planning is provided for five counties in the Area 15 Transportation Equity Act (TEA-21). Those counties are Jefferson, Keokuk, Mahaska, Van Buren, and Wapello.

Housing

The RPC provides assistance and administrative support for various housing programs including: housing rehabilitation, low-interest "down payment/closing costs" loans for first time homebuyers, rental inspection services, and lead-paint inspections. Housing plans, needs assessments and surveys are also available.

PLANNING SERVICES cont.

Development Controls/Incentives

Area 15 RPC assists local governments in preparation of comprehensive plans, zoning and subdivision ordinances to ensure the well being of citizens during times of development.

Assistance is also available for incentive programs such as Tax Abatement and Tax Increment Financing. These programs are administered in conjunction with Urban Renewal Plans and Urban Revitalization Plans. City Codification is also available to keep cities up-to-date on changes in the Iowa Code regulations.

Technical Assistance

Communities and Counties who lack staff and resources to undertake certain projects turn to Area 15 RPC. Grant preparation is a frequent technical assistance request as professional grant research and writing maximizes the chances of a community's funding success. Area 15 RPC also provides supportive assistance in administering grants and loans.

Special Services

The RPC also provides assistance in regard to:

- Historic Preservation
- Historic Surveys
- Environmental Assessment & Planning
- Transportation studies
(air, rail, trail, highway, etc.)
- Preparation of Employee Handbooks and Job Descriptions